



Aberdeen Investments: approach to climate change

May 2025

Contents

Who we are	2
Introduction	3
Our focus areas	3
Our climate approach	4
Active ownership	6
Collaboration and influence	6



Who we are

Our spirit is our strength

For over a century, we've carried our Scottish spirit with us in everything we do. Our sense of adventure has taken us to new markets, and our courage to invest when others haven't has unlocked global opportunities. Our resilience through challenging markets has formed the foundation of our long-term strategy.

We are a global specialist asset manager, managing £359.6bn in assets for clients across 80 countries, with experts on the ground in more than 25 locations¹. Our confidence allows us to harness our knowledge and focus on our core strengths so we can keep delivering for our clients.

Investment involves risk and possible loss of capital.

¹ All data, facts and figures are as of 31 March 2025.

Introduction

Climate change poses significant material financial risks, with the potential to disrupt economies, reshape industries, and impact financial systems – ultimately affecting our clients' investments.

Recognising this, we are committed to integrating climate-related risks and opportunities into our investment analysis and active ownership practices. Our goal is to ensure that we are not only managing risks effectively but also identifying and capitalising on opportunities that arise from the transition to a low-carbon economy.

To support this, we have developed a comprehensive suite of climate capabilities grounded in high-quality, forward-looking data and analysis. These capabilities focus on real-world decarbonisation and the energy transition, enabling us to deliver investment solutions and insights that help our clients achieve both their sustainability-related and financial objectives.

This document outlines our methodology for embedding climate considerations into our investment processes and active ownership activities.



Our focus areas

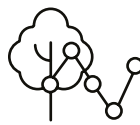
Enabling clients to achieve their climate goals

We are constantly evolving our understanding and capabilities through our approach which is based on six focus areas:



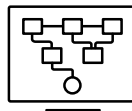
Research and data

We provide insights on how evolving policy and physical changes will impact sustainable investment themes and the data required to best support client expectations.



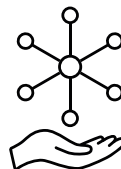
Investment integration

We develop tools and frameworks to support the integration of climate considerations into investment decision-making where there is a client interest in doing so.



Client solutions

We develop investment solutions and engage with clients to support their climate objectives.



Active ownership

We engage our highest financed emitters to seek transparency against transition milestones, as well as with priority companies to understand how they manage their nature-related risks.



Collaboration and influence

We enhance our own, and the markets', knowledge of material financial implications of the environmental transition, supporting our understanding of the evolving expectations around sustainable investment.

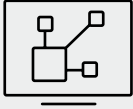


Disclosure

Disclosure helps us to better understand how effectively assets are managing their financially material environmental risks. In return, we know that clients benefit from our disclosures.

Our climate approach

We use our climate building blocks to inform our investment approach and help clients integrate climate into their portfolios.



Our building blocks

Our building blocks are proprietary tools and frameworks that enable our investment approach, supporting the integration of climate-related risk and opportunity into our decision-making processes and client portfolios. Tools, such as carbon metrics and scenario analysis, are available on-desk to our fund managers, with the objective of enabling climate-resilient portfolio construction and solutions development, working in addition to the expertise of dedicated sustainability and ESG professionals.

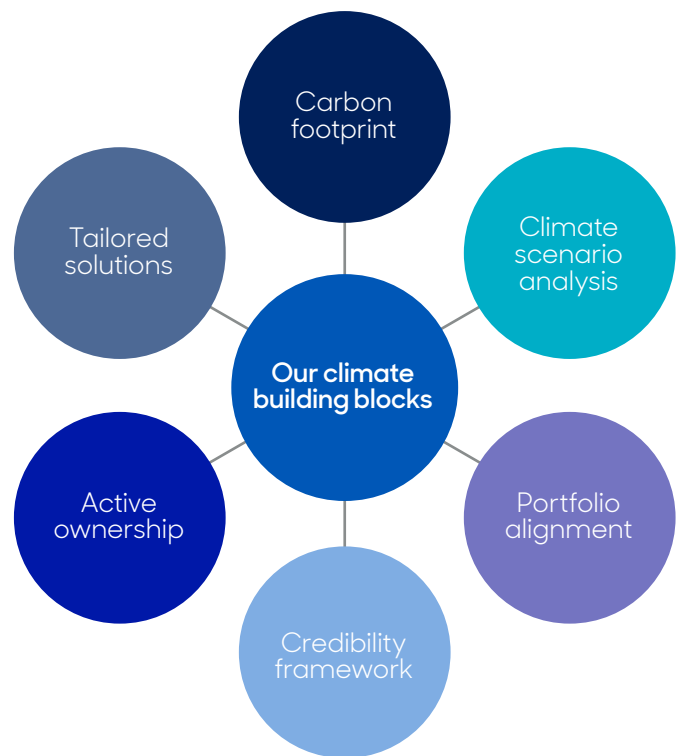


A complementary approach

In managing portfolios for clients with carbon targets, a robust carbon footprinting tool is necessary to monitor progress against objectives. However, forward-looking tools play an increasingly critical role in delivering targeted outcomes. As climate investment integration matures and becomes more sophisticated, we have increased our range of integration methods, tools and frameworks, with greater focus on forward-looking tools.

We have developed a bespoke approach to climate scenario analysis that provides forward-looking, top-down assessments of financial impacts, as well as emissions pathway projections. These assessments can be combined with bottom-up portfolio alignment and credibility frameworks to enable company-level views of decarbonisation.

This combined insight informs our thematic active engagements, enabling us to take a holistic approach to climate integration within portfolio construction. This can be tailored to each client, each of which may have different objectives.



Carbon footprint

Utilising the core carbon metrics to manage carbon exposures, identify carbon risks and meet decarbonisation ambitions.

Climate scenario analysis

Forward-looking analysis using a bespoke scenario framework to identify asset- and portfolio-level climate risks and opportunities, and projected decarbonisation pathways.

Portfolio alignment

Proprietary methodology to identify climate solution and transition leaders to support research and portfolio construction.

Credibility framework

Assessment of company ambition levels versus their actions using a six-factor scoring scale to support investment integration.

Active ownership

Targeting our highest-financed emitters to set clear and relevant milestones, focusing on assets that could have the biggest impact.

Tailored solutions

Supporting investors on their journey to integrate climate change into their investment and reporting process.

Applicability and coverage of our climate building blocks across asset classes

Our climate building blocks support decision-making across our investment process at different levels of integration. The matrix below maps our core building blocks against asset classes to give a view of applicability for various investment strategies. It is important to note that our building blocks enable a wider process, and insights may not be material to every investment decision.

Asset class	Portfolio carbon footprinting	Climate scenario analysts	Credibility assessment framework	Portfolio alignment	Active ownership	Tailored solutions
Equities	●	● — ○ — ●	○	●	●	●
Corporate Credit	●	● — ○ — ●	○	●	●	●
Quantitative Strategies	●	● — ○ — ●	○	●	●	●
Real Estate	●	●	○	●	●	●
Multi-asset	●	●	○	●	●	●
Sovereign bonds	●	●	○ — ●	●	●	●
Infrastructure	●	●	○	●	●	●
Private credit	●	●	○	●	●	●
Cash	●	●	○	●		
FX	●	●	○	●		
Derivatives	●	●	○	●		
Passive funds	●	●	○	●	●	●
Third party funds	●	●	○	●		
Execution only funds	●	●	○	●		

Key	Definition
● Full scope	The asset class is in scope of the tool or metric
● Partial scope	A proportion of the asset class is in scope to utilise the tool, or metric, or is in development
● Out of scope	The asset class is out of scope for the reporting year, but tool development is being explored
● Not applicable	The tool is deemed to be not applicable for the next 1–2 years, or deemed not relevant to the asset class
○ Enabler	The tool or processes better enables or enhances the outputs of another complementary tool

The purpose of this matrix is to provide an illustrative view of the applicability of climate building blocks to different asset classes. This is intended to inform stakeholders of how our tools can support climate-related risk management in our investment processes. This illustration is not a reflection of a particular product or investment strategy, and applicability should not be interpreted as a reflection of all investment decisions. There are many factors that drive decision-making, and our building blocks aim to inform cases where climate-related risks are material to specific circumstances and support the aggregate delivery of our climate strategy. This matrix also does not capture bespoke pieces of investment analysis.



Active ownership



Engagement with companies to help identify and mitigate climate risk

Supporting real-world decarbonisation

Within our Investments business, our climate engagement strategy is focused on understanding climate-related financial risks within our holdings and driving real-world decarbonisation. One way we can do this is through engaging with our largest publicly listed financed emitters to seek transparency on decarbonisation milestones and to advocate for increased disclosure. Our expectation is that companies are effectively managing climate risk, with our assessment of the credibility of a company's decarbonisation plan informed by our bespoke credibility framework and other relevant standards, such as the Climate Action 100+ Net Zero Benchmark.

An engagement-led approach to climate risk

Active ownership is a powerful tool to mitigate financial risks and to influence real-world decarbonisation. It allows us to challenge companies on their transition strategies and to influence corporate behaviour. Our proprietary 'credibility framework' serves as a foundation tool for us to pinpoint transition leaders. However, to conduct a more proactive analysis – especially in regions with limited data and disclosure gaps – an engagement-led approach becomes imperative.

Our climate stewardship approach quantitatively assesses the integrity of companies' climate transition plans. It's built on the following indicators:

- A company has a clear and transparent decarbonisation plan.
- Policy support is favourable.
- Investments are made in net-zero-enabling technologies.
- The allocation for 'green' capital expenditure is specifically dedicated to environmental initiatives.

Active ownership helps us to hold companies accountable through monitoring progress and by setting milestones. We assess progress against these milestones and determine whether the company is likely to achieve their climate ambitions. We can escalate our concerns in a variety of ways, including revising our quantitative assessment of a company, taking voting action and by collaborative engagement.

Collaboration and Influence

Industry associations & statements

We collaborate with industry associations on a number of initiatives to encourage action and data transparency from the companies in which we invest. A list of these is available in our annual Sustainability and TCFD report. We are members of, and affiliated with, a wide range of industry bodies, trade associations and sustainability initiatives. This enables us to share knowledge, insights, ideas and perspectives.

Collective engagement

We are willing to act collaboratively with other investors in seeking to protect and enhance shareholder value, or to otherwise address issues that are relevant to our clients' best interests.

To help us effectively participate in collective engagement, we maintain good working relationships with other institutional investors. We also support collaborative engagements organised by representative bodies and others, when these are aligned with our clients' interests.

We work with a number of organisations in order to participate in collective engagement. Examples of the most significant of these organisations include:

- The Investment Association
- The Council of Institutional Investors
- The Investor Forum
- The Asian Corporate Governance Association
- The Principles for Responsible Investment
- The Institutional Investor Group on Climate Change
- Climate Action 100+
- The 30% Club Investor Group.

Important Information

Investment involves risk. The value of investments and the income from them can go down as well as up and an investor may get back less than the amount invested.

The information in this document is not for general circulation and should not be considered an offer, or solicitation, to deal in any funds. The information is provided on a general basis for information purposes only, and is not to be relied on as investment, legal, tax or other advice, as it does not take into account the investment objectives, financial situation or particular needs of any specific investor.

Any research or analysis used to derive, or in relation to, the information herein has been procured by Aberdeen for its own use, and may have been acted on for its own purpose. The information herein, including any opinions or forecasts have been obtained from or is based on sources believed by Aberdeen to be reliable, but Aberdeen does not warrant the accuracy, adequacy or completeness of the same, and expressly disclaims liability for any errors or omissions. As such, any person acting upon or in reliance of these materials does so entirely at his or her own risk. Past performance is not necessarily indicative of future performance. Any projections or other forward-looking statements regarding future events or performance of countries, markets or companies are not necessarily indicative of, and may differ from, actual events or results. No warranty whatsoever is given and no liability whatsoever is accepted by Aberdeen, for any loss, arising directly or indirectly, as a result of any action or omission made in reliance of any information, opinion or projection made in this document.

The information herein shall not be disclosed, used or disseminated, in whole or part, and shall not be reproduced, copied or made available to others. Aberdeen reserves the right to make changes and corrections to the information, including any opinions or forecasts expressed herein at any time, without notice.

Applying ESG and sustainability criteria in the investment process may result in the exclusion of securities within the universe of potential investments. The interpretation of ESG and sustainability criteria is subjective meaning that products may invest in companies which similar products do not (and thus perform differently) and which do not align with the personal views of any individual investor. Furthermore, the lack of common or harmonized definitions and labels regarding ESG and sustainability criteria may result in different approaches by managers when integrating ESG and sustainability criteria into investment decisions. This means that it may be difficult to compare strategies within ostensibly similar objectives and that these strategies will employ different security selection and exclusion criteria. Consequently, the performance profile of otherwise similar vehicles may deviate more substantially than might otherwise be expected. Additionally, in the absence of common or harmonized definitions and labels, a degree of subjectivity is required and this will mean that a product may invest in a security that another manager or an investor would not.

This communication constitutes marketing, and is available in the following countries/regions and issued by the respective Aberdeen Group members detailed below. The Aberdeen Group comprises Aberdeen Group plc and its subsidiaries: (entities as at 22 April 2025)

United Kingdom (UK)

abrdn Investment Management Limited registered in Scotland (SC123321) at 1 George Street, Edinburgh EH2 2LL. Authorised and regulated in the UK by the Financial Conduct Authority.

Europe¹, Middle East and Africa

¹ In EU/EEA for Professional Investors, in Switzerland for Qualified Investors – not authorised for distribution to retail investors in these regions.

Belgium, Cyprus, Denmark, Finland, France, Greece, Iceland, Ireland, Italy, Luxembourg, Netherlands, Norway, Portugal, Spain, and Sweden: Produced by abrdn Investment Management Limited which is registered in Scotland (SC123321) at 1 George Street, Edinburgh EH2 2LL and authorised and regulated by the Financial Conduct Authority in the UK. Unless otherwise indicated, this content refers only to the market views, analysis and investment capabilities of the foregoing entity as at the date of publication. Issued by abrdn Investments Ireland Limited. Registered in Republic of Ireland (Company No.621721) at 2-4 Merrion Row, Dublin D02 WP23. Regulated by the Central Bank of Ireland. **Austria, Germany:** abrdn Investment Management Limited registered in Scotland (SC123321) at 1 George Street, Edinburgh EH2 2LL. Authorised and regulated by the Financial Conduct Authority in the UK. **Switzerland:** abrdn Investments Switzerland AG. Registered in Switzerland (CHE-114.943.983) at Schweizergasse 14, 8001 Zürich. **Abu Dhabi Global Market ("ADGM"):** abrdn Investments Middle East Limited, Cloud Suite 205, 15th floor, Al Sarab Tower, Abu Dhabi Global Market Square, Al Maryah Island, P.O. Box 5327224, Abu Dhabi, United Arab Emirates. Regulated by the ADGM Financial Services Regulatory Authority. For Professional Clients and Market Counterparties only. **South Africa:** abrdn Investments Limited ("abrdnIL"). Registered in Scotland (SC108419) at 1 George Street, Edinburgh EH2 2LL. abrdnIL is not a registered Financial Service Provider and is exempt from the Financial Advisory And Intermediary Services Act, 2002. abrdnIL operates in South Africa under an exemption granted by the Financial Sector Conduct Authority (FSCA FAIS Notice 3 of 2022) and can render financial services to the classes of clients specified therein. Aberdeen Investments Global is a business name of the foregoing entities.

Asia-Pacific

Australia and New Zealand: abrdn Oceania Pty Ltd (ABN 35 666 571 268) is a Corporate Authorised Representative (CAR No. 001304153) of AFSL Holders MSC Advisory Pty Ltd, ACN 607 459 441, AFSL No. 480649 and Melbourne Securities Corporation Limited, ACN 160 326 545, AFSL No. 428289. In New Zealand, this material is provided for information purposes only. It is intended only for wholesale investors as defined in the Financial Markets Conduct Act (New Zealand).

Hong Kong: abrdn Hong Kong Limited. This material has not been reviewed by the Securities and Futures Commission.

Japan: abrdn Japan Limited Financial Instruments Firm: Kanto Local Finance Bureau (Kinsho) No.320 Membership: Japan Investment Advisers Association, The Investment Trusts Association, Type II Financial Instruments Firms Association.

Malaysia: abrdn Malaysia Sdn Bhd, Company Number: 200501013266 (690313 -D). This material has not been reviewed by the Securities Commission of Malaysia. **Thailand:** Aberdeen Asset Management (Thailand) Limited.

Singapore: abrdn Asia Limited, Registration Number 199105448E. Aberdeen Investments Global is a business name of the foregoing entities.

Americas

Brazil: abrdn Brasil Investimentos Ltda. is an entity duly registered with the Comissão de Valores Mobiliários (CVM) as an investment manager. Aberdeen Investments Global is a business name of the foregoing entity. **Canada:** Aberdeen Investments is the registered marketing name in Canada for the following entities: abrdn Canada Limited, abrdn Inc, abrdn Investments Luxembourg S.A., and abrdn Alternative Funds Limited. abrdn Canada Limited is registered as a Portfolio Manager and Exempt Market Dealer in all provinces and territories of Canada as well as an Investment Fund Manager in the provinces of Ontario, Quebec, and Newfoundland and Labrador. **United States:** Aberdeen Investments Global is the trade name of Aberdeen's investments business, herein referred to as "Aberdeen Investments" or "Aberdeen". In the United States, Aberdeen Investments refers to the following affiliated, registered investment advisers: abrdn Inc., abrdn Investments Limited, and abrdn Asia Limited.